

Technical Specifications for Sealed S-Type Load Cell for RC feeders Stage-2 GHTP
(Model: SSM-ARS-150 or equivalent)

2-3
3

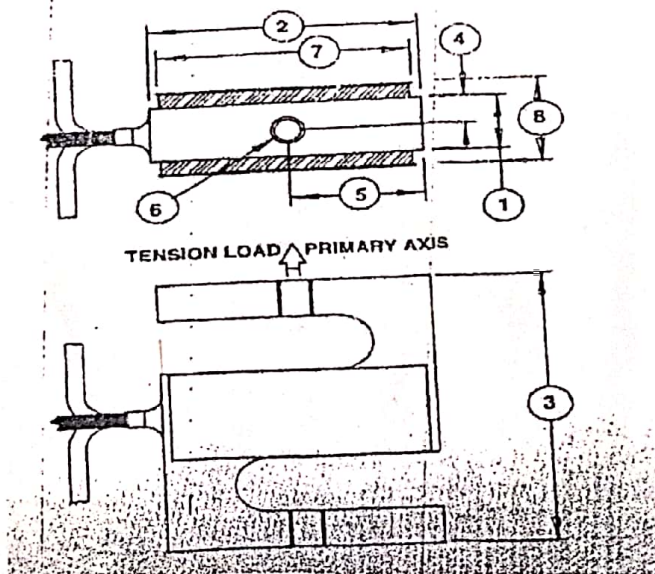
Accuracy -(MAX ERROR)	
Nonlinearity-%FS	± 0.05
Hysteresis-%FS	± 0.03
Nonrepeatability-%RO	± 0.02
Creep in 20 min-%	± 0.03

TEMPERATURE	
Compensated Range-°F/°C	0 to 150/ -20 to 65
Operating Range-°F/°C	-65 to 300/ -50 to 150
Effect on Output-%/°F-MAX	± 0.0008
Effect on Zero-%RO/°F-MAX	± 0.0015

ELECTRICAL	
Rated Output-mV/V (Nominal)	3
Zero Balance-%RO	+ 1
Bridge Resistance-Ohm (Nominal)	350
Excitation Voltage-MAX	15VDC
Insulation Resistance-Megohm	>5000

MECHANICAL	
Calibration	Tension
Safe Overload-%CAP	150
Cable Length-ft	15
Capacity (lbf)	150

DIMENSIONS	
See Drawing	in inches
(1)	0.50
(2)	2.00
(3)	2.50
(4)	0.25
(5)	1.00
(6)	1/4-28 UNF-2B
(7)	1.88
(8)	0.72



Handwritten signature
18/10/2022